

## Digital Cadastral Database Upgrades

Terrex Spatial provides highly accurate upgrade services to Digital Cadastral Database (DCDB) information for local councils using a least squares process.

Since 2002, Terrex Spatial (formerly DSS) has been continuously upgrading DCDBs for various Australian local councils, and have upgraded over 300,000 parcels to date.

Terrex Spatial has the experience and commitment to achieve the most precise DCDB upgrades for your data. The dedicated GIS team are fully trained and highly qualified in using industry and custom developed GIS software.



All necessary elements are completed in-house, with each project completed internally within the organisation.

Field surveys are coordinated directly in relation to the processing of the data set, ensuring all completed projects are produced in the most efficient and cost-effective way.

Updating the database is completed using a system whereby metres and bounds for all cadastral parcel boundaries are entered into cadastral corners linked to accurate ground control and least squares analysis is undertaken. The final product is able to be upgraded to an accuracy of up to 50mm (at the 95% confidence interval).

Once the base layer DCDB has been upgraded, Terrex Spatial can then migrate all other layers, such as roads, water pipes or sewer infrastructure onto this new data set.

## Equipment

Terrex Spatial utilise the latest surveying technology and equipment on all crews.

### Vehicles

3 x 2WD Survey Vehicles  
15 x 4WD Survey Vehicles

### Caravans and Trailers

1 x 3-Room Caravan  
3 x 1-Room Caravans  
3 x Trailers

### NovAtel GPS Receivers

19 x Dual Frequency + Glonass RTK  
11 x Dual Frequency RTK  
1 x Dual Frequency + Glonass + INS

### Robotic Survey Equipment

Sokkia SRX Robotic Total Station  
Leica 1100 Robotic Total Station  
Leica 1200 Robotic Total Station

### Gravity Survey Equipment

2 x LaCoste and Romberg Model G Instruments

### Survey Equipment

Leica Digital Level DNA10

## DCDB Projects

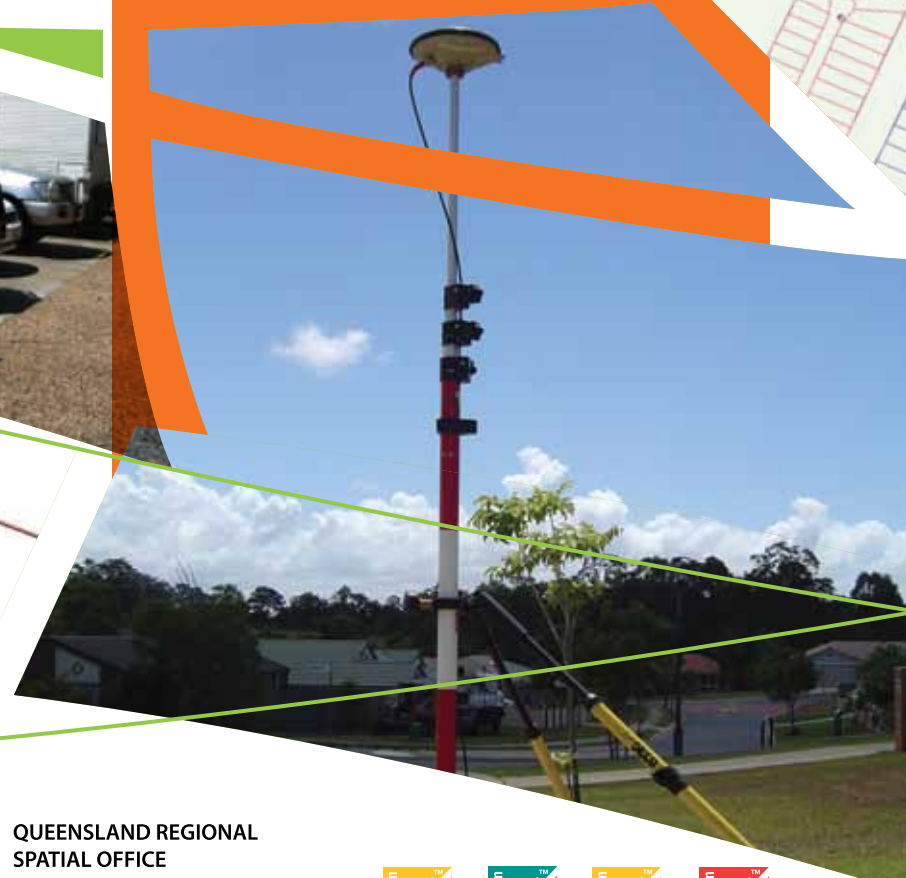
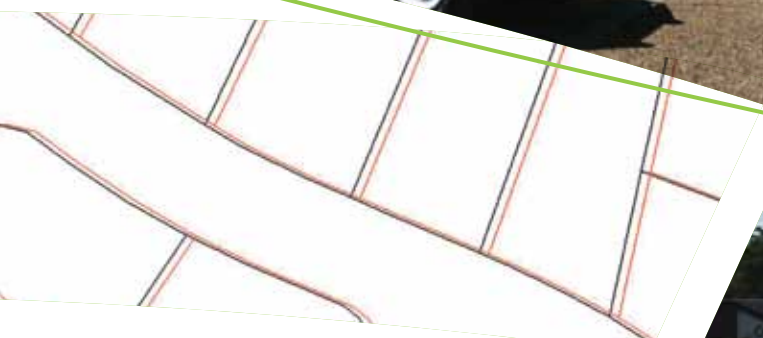
Terrex Spatial have completed DCDB upgrades for the following councils:

- Bundaberg Regional Council
- Gladstone Council
- Glenorchy City Council
- Pine Rivers Shire Council
- Rockhampton Regional Council
- Douglas Shire Council
- Caloundra City Council
- Richmond Valley Council

## Terrex Spatial Services

Terrex Spatial provides specialised surveying services for projects including:

- Engineering and Mining
- LiDAR Aerial Mapping
- Digital Terrain Modelling
- Seismic Exploration
- Geodetic Control
- Pipelines



### PERTH HEAD OFFICE

Level 4, 76 Kings Park Rd  
West Perth WA 6005

PO Box 1975  
West Perth WA 6872

T +61 8 9235 4600

F +61 8 9324 3640

E [info@terrexspatial.com](mailto:info@terrexspatial.com)

[www.terrexspatial.com](http://www.terrexspatial.com)

### BRISBANE

### OPERATIONS OFFICE

22 Crockford St  
Banyo QLD 4014

T +61 7 3621 0300

F +61 7 3266 7345

### QUEENSLAND REGIONAL

### SPATIAL OFFICE

100 Rockhampton Rd  
Yeppoon QLD 4703

T +61 7 4939 2866

F +61 7 4939 2867

